

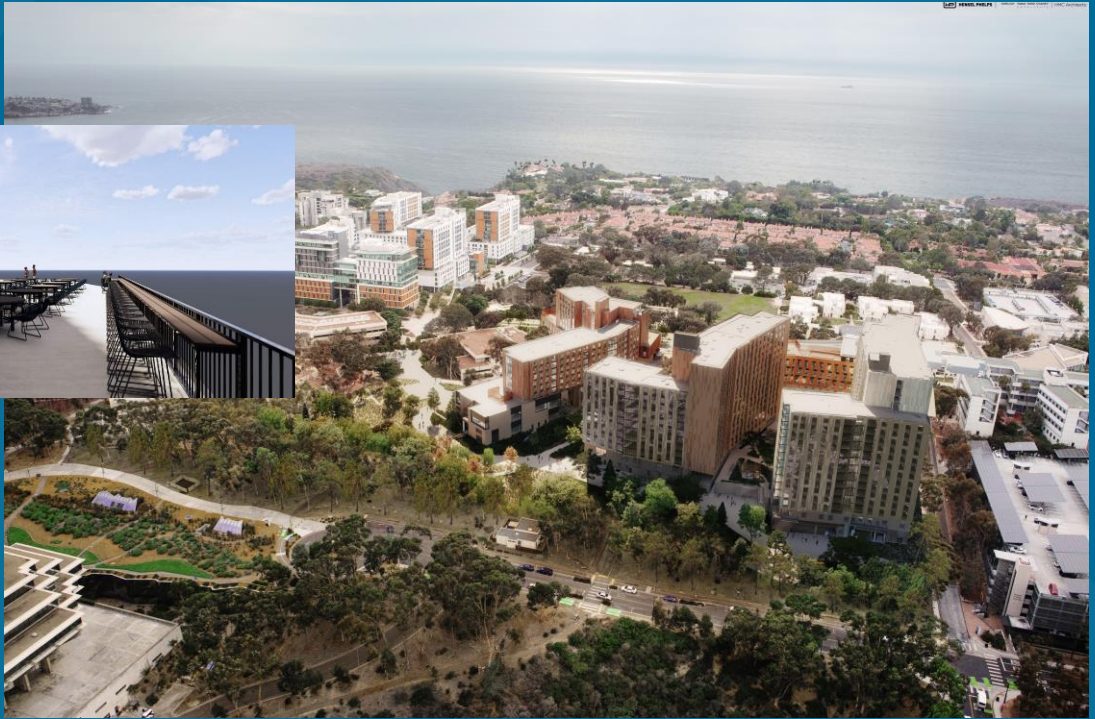
# UC San Diego

## RIDGE WALK NORTH LIVING LEARNING NEIGHBORHOOD CAPITAL PROGRAM MANAGEMENT

RRSS Supervisor & Manager Meeting

February 4, 2025

2,444 Student Beds  
+ 11 Staff Beds (5 professional staff units)



- 8 and 10 bed residential suites, including RA beds
- Residential Support includes community kitchen, laundry, social gathering spaces, wellness
- Residential Life Offices
- Hospitality Information service desk and mail room, breakroom
- Facilities and building services offices and custodial storage, breakroom
- Human Resources
- Café Market
- Glass Lab – Operated by student affairs and maintained by RRSS
- Outdoor landscaped and open areas for student recreation, study and gathering
- Ridge Walk connection
- Pedestrian pathways to travel through and enjoy the site and community
- Service access path for facilities vehicle travel



Ten-Bed Suite Organization



Eight-Bed Suite Organization



Living Room Elevation



Two-Story Great Room



Eight-Bed Suite Bedroom Elevation

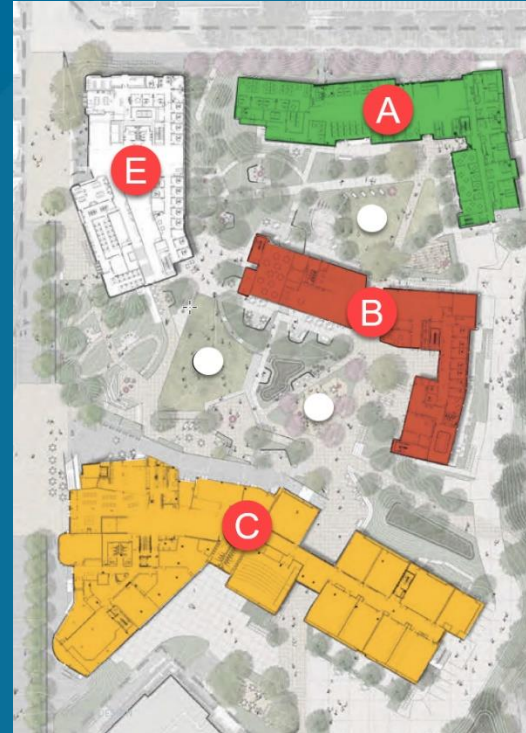


HENSEL PHELPS

EHRlich YANAI RHEE CHANEY

HMC Architects

swa



1. Alianza - A
2. Umoja - B
3. Coalition - C
4. Brian C. Malk Hall – E

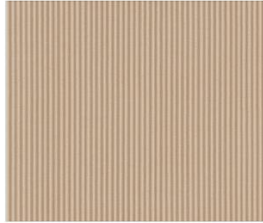
Building C - guardrail-integrated counter study

09/27/2024



## MATERIALS

The incorporation of natural and tactile materials (such as wood, natural fibers, etc.) into a space can also support mental well-being. The use of tactile materials encourages employees to engage directly with their sense of touch—an often overlooked aspect of well-being.



FIBER CEMENT COLORS AT BUILDING C



CERACLAD FIBER CEMENT - BUILDINGS A, B, & C



TYPICAL GLASS



METAL PANEL AT HOUSING



GALV STEEL RAILINGS



WINDOW FRAME/MULLION



CHEVRON METAL PANELS AT HOUSING



- Design Build Team Selection – October 10<sup>th</sup> 2022
- Open Space, CCPC, DRB Presentations – Nov. – Dec. 2022
- Code Cycle Confirmation – December 21, 2022
- Regents Approval - March 15, 2023
- Drawing Packages & Permitting – October, 2022 – Feb. 2024,  
Three packages coordinated with stages of construction
- Construction Start - June 19, 2023
- Occupancy
  - Housing - Fall 2025
  - Academic - Winter Quarter 2026

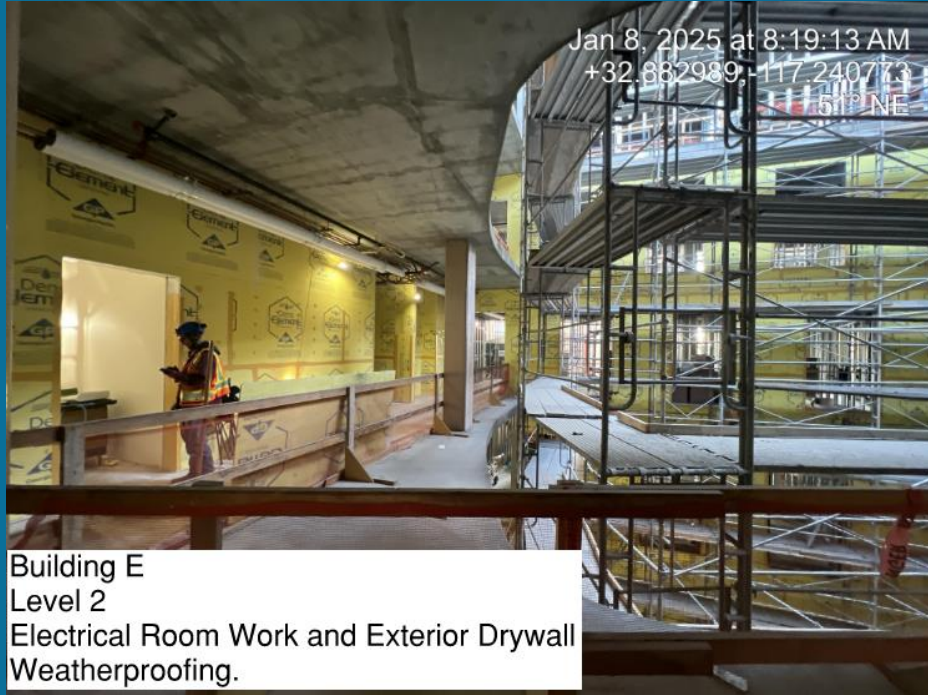












Building E  
Level 4  
Interior Framing





